

Project Name:	Location:	MFG: Hanover Lantern
Fixture Type:	Catalog No.:	Qty:

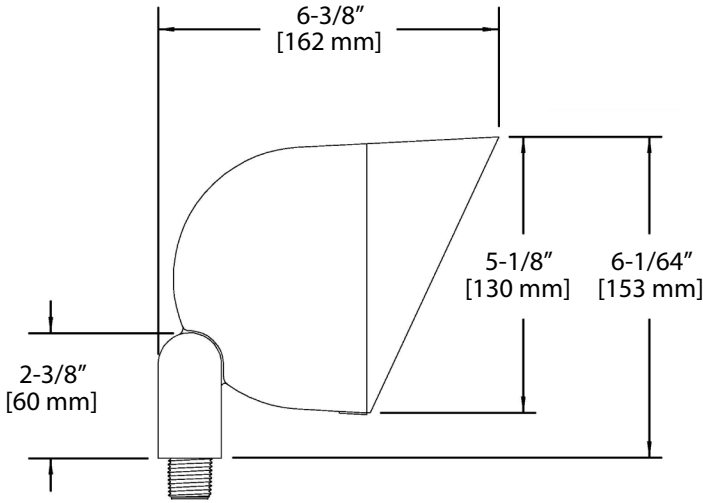
**Ordering Guide**

Example: SLA125BLK

<b>Product Code</b>	SLA125	Spotlight
<b>Finish</b>	BLK	Black
	VGN	Verde
	BRZ	Bronze

**Measurements**

<b>Height</b>	6 1/64" (153mm)
<b>Width</b>	5 1/8" (130mm)
<b>Length</b>	6 3/8" (162mm)
<b>Max. Weight</b>	1.62 lb.



**Specifications**

**Housing:**

Die-cast aluminum. Fully-adjustable swivel arm with vibration-proof locking teeth. Fully rotatable shroud, gasketed die-cast aluminum. Fasteners are 300 series stainless steel. 1/2" NPS male threads to screw on to accessory mounting stake or junction box, sold separately.

**Finish:**

Thermoset polyester powdercoat is electrostatically applied after a five-stage conversion cleaning process and bonded by heat fusion thermosetting.

**Lamping:**

50W maximum PAR36 screw terminal lamp. Lower wattage lamps are acceptable.

**Electrical Assembly:**

Double screw terminal socket. 12 volt fixture is prewired with 3-ft pigtail of 18-2 AWG, 105° C, SPT-1 wire. Low voltage quick connector (catalog #GLVC3) included for easy hook-up to the low voltage supply cable, not included. 12 volt system requires remote transformer, not included.

**Warranty:**

Three-year limited warranty.

**Certification:**

UL Listed to U.S. safety standards for wet locations. cUL Listed to Canadian safety standards for wet locations. Manufactured to ISO 9001:2000 Standards.

**Accessories:**

- GS1 Mounting Stake.
- GS7 Mounting Stake.
- GS8 Mounting Stake.