

LANTERNS WILL BE PREWIRED AND TESTED.
 ALL ELECTRICAL COMPONENTS ARE U.L. LISTED.
 ALL MOUNTING HARDWARE IS SUPPLIED.

Drawing for illustration only - scale approximate

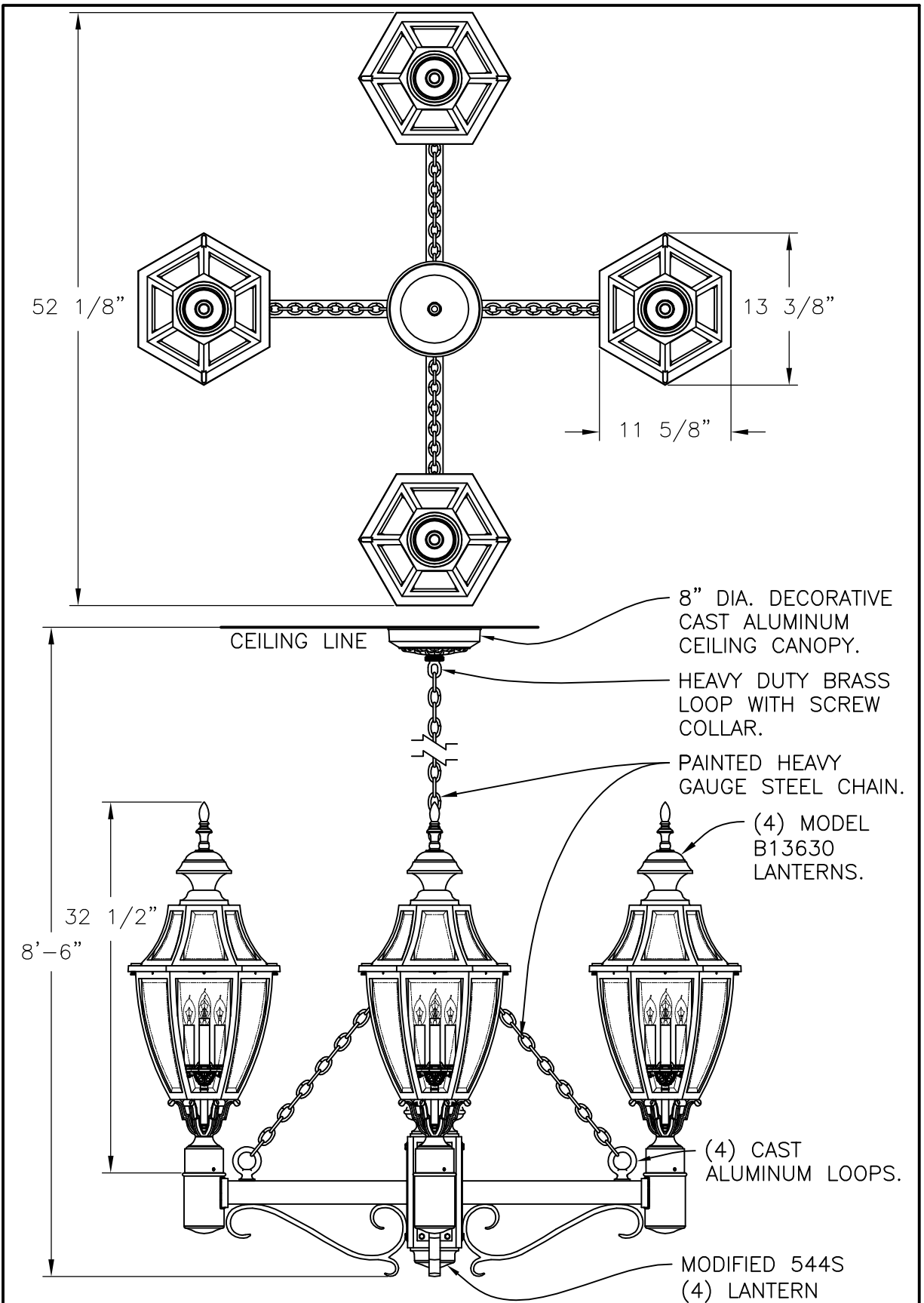
HEIGHT	8'-6"
WIDTH	49 3/8"
PROJECTION	
TOP TO OUTLET	7'-10 5/8"

Hanover
 LANTERN, Inc.
 350 KING LANE HANOVER PA. 17331
 PH: (717) 632-4444 - FAX: (717) 632-5030

SCALE: 1=8 DATE: 01/27/09 DWG BY: RSN

TITLE:
 MODIFIED B13430
 AND 544S
 CHAIN HUNG
 LANTERNS

DWG. NO. L60252



LANTERNS WILL BE PREWIRED AND TESTED.
 ALL ELECTRICAL COMPONENTS ARE U.L. LISTED.
 ALL MOUNTING HARDWARE IS SUPPLIED.

- 8" DIA. DECORATIVE CAST ALUMINUM CEILING CANOPY.
- HEAVY DUTY BRASS LOOP WITH SCREW COLLAR.
- PAINTED HEAVY GAUGE STEEL CHAIN.
- (4) MODEL B13630 LANTERNS.
- (4) CAST ALUMINUM LOOPS.
- MODIFIED 544S (4) LANTERN BRACKET ASSEMBLY.

Drawing for illustration only - scale approximate

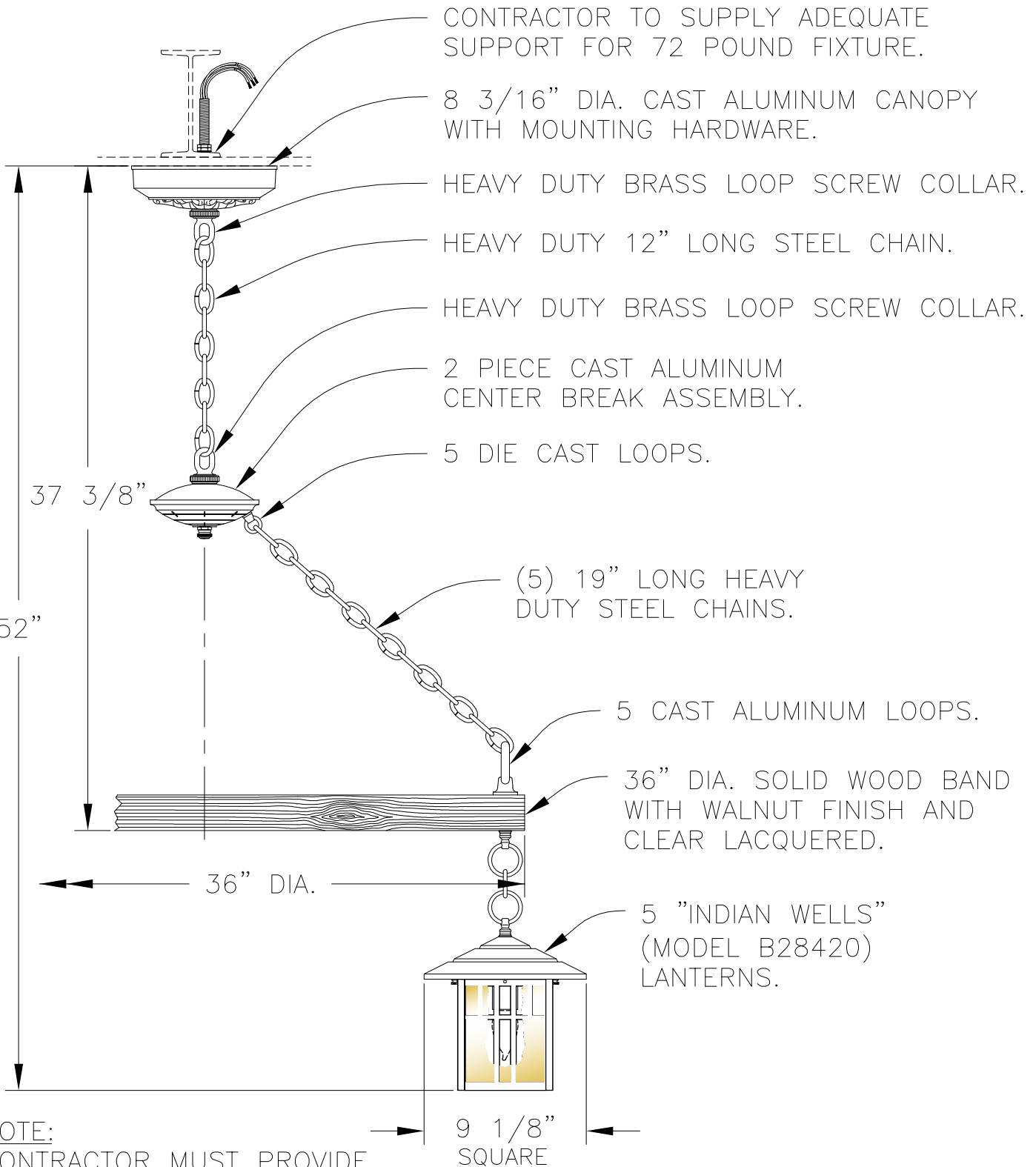
HEIGHT	8'-6"
WIDTH	52 1/8"
PROJECTION	
TOP TO OUTLET	7'-10 5/8"

Hanover
 LANTERN, Inc.
 350 KINGSDOME LANE, HANOVER, PA. 17331
 PH: (717) 632-4444 - FAX: (717) 632-5639

SCALE: 1=8 DATE: 01/27/09 DWG BY: RSN

TITLE:
 MODIFIED B13630
 AND 544S
 CHAIN HUNG
 LANTERNS

DWG. NO. L60253



NOTE:
CONTRACTOR MUST PROVIDE AMPLE MEANS TO SUPPORT HANGING FIXTURE WEIGHING APPROX. 72 POUNDS.

Drawing for illustration only – scale approximate

HEIGHT	52"
WIDTH	43"
PROJECTION	
TOP TO OUTLET	

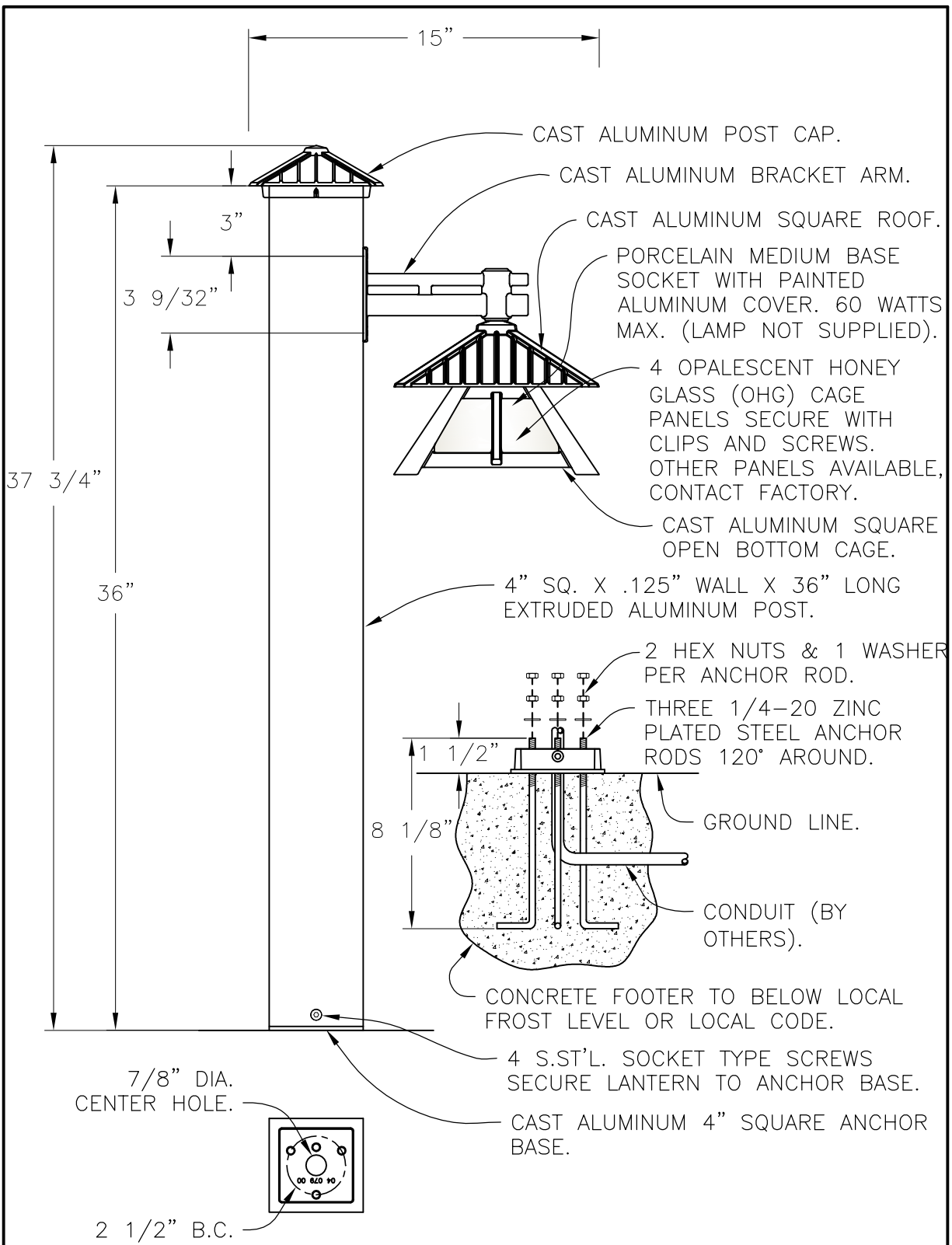
Hanover
LANTERN, inc.

350 KINDIG LANE HANOVER PA 17331
PH: (717) 632-6464 - FAX: (717) 632-5039

SCALE: 1=8 DATE: 03/15/06 DWG BY: RSN

TITLE: 5 LIGHT BAND FIXTURE WITH B28420

DWG. NO. L61640

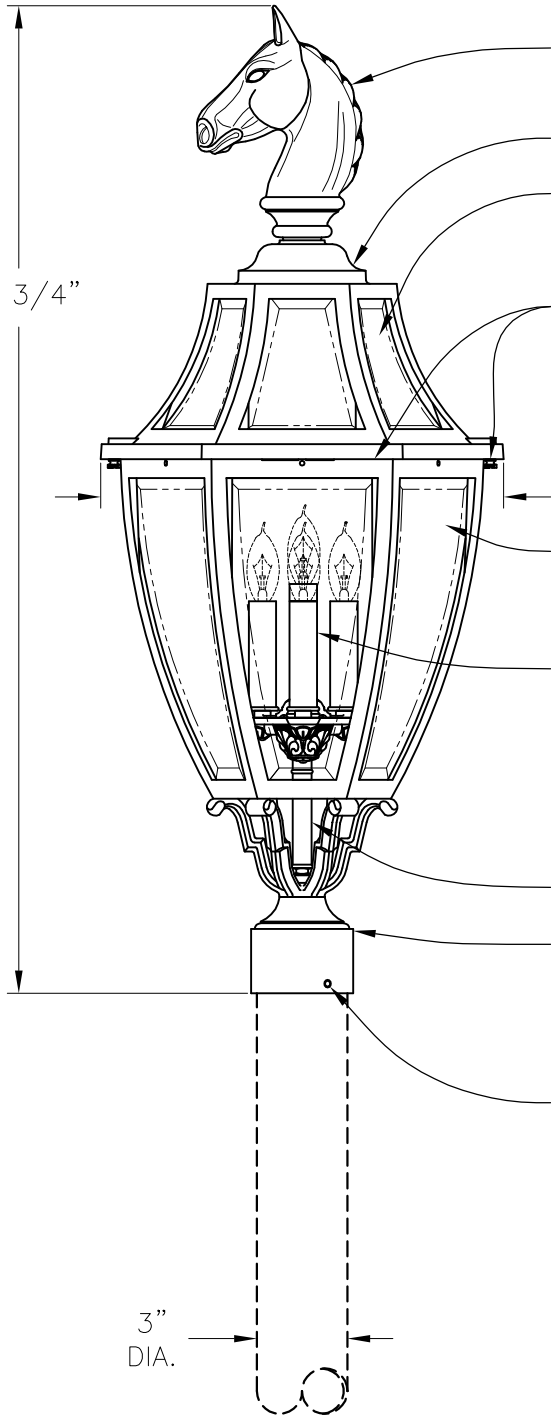


LANTERN WILL BE PREWIRED AND TESTED.
 ALL ELECTRICAL COMPONENTS ARE UL. LISTED.
 MOUNTING HARDWARE IS SUPPLIED.

Drawing for illustration only - scale approximate

APPROVAL SIGNATURE:		FINISH: _____	<input type="checkbox"/> Mercury Vapor <input type="checkbox"/> Metal Halide <input type="checkbox"/> High Pressure Sodium	Hanover LANTERN <small>Hanover Lantern is a trademark of the Philips Group</small>	TITLE:
HEIGHT	37 3/4"	PANELS: _____			PHILIPS
WIDTH	15"	SOCKET:	WATTAGE: _____	SCALE:	DATE:
PROJECTION		<input type="checkbox"/> MEDIUM <input type="checkbox"/> MOGUL	VOLTAGE: _____	1=4	10/01/09
TOP TO OUTLET			POWER FACTOR: <input type="checkbox"/> NPF <input type="checkbox"/> HPF	DWG BY:	DWG. NO.
				JEK	L67071

32 3/4"



- CAST ALUMINUM HORSE HEAD FINIAL.
- CAST ALUMINUM HEX ROOF.
- 6 (CBG) CLEAR BEVELED GLASS ROOF PANELS SECURED WITH CLIPS AND SCREWS.
- CAST ALUMINUM HEX CAGE W/FROG BOTTOM. (2) 8-32 BRASS THUMBSCREWS SECURE ROOF TO CAGE. TO RELAMP, REMOVE THUMBSCREWS.
- 13 3/8" DIAMETER
- 6 (CBG) CLEAR BEVELED GLASS CAGE PANELS SECURED WITH CLIPS AND SCREWS.
- 4 LIGHT CANDLE CLUSTER. 4 CANDELABRA SOCKETS W/PAINTED METAL COVERS. 2 PC. PAINTED CLUSTER BODY. 25 WATT MAX. PER SOCKET. (LAMPS NOT SUPPLIED)
- PAINTED ALUMINUM SLEEVE.
- CAST ALUMINUM POST FITTER SLIPS OVER 3" O.D. POST OR TENON. (POST MUST BE ORDERED SEPARATELY.)
- 3 S.ST'L SET SCREWS SECURE LANTERN TO POST OR TENON.

3" DIA.

LANTERN IS PREWIRED AND TESTED.
ALL ELECTRICAL COMPONENTS ARE U.L. LISTED.
ALL MOUNTING HARDWARE SUPPLIED.

HEIGHT	32 3/4"
WIDTH	13 3/8"
PROJECTION	
TOP TO OUTLET	

Drawing for illustration only - scale approximate

Hanover
LANTERN, Inc.
300 KENDIG LANE HANOVER PA 17331
PH: (717) 632-4464 - FAX: (717) 632-5030

SCALE: 1=4 DATE: 08/20/09 DWG BY: ATV

TITLE: MODIFIED "AUGUSTA" 13600 SERIES POST TOP LANTERN

DWG. NO. L66862